

COLOUR RANGE

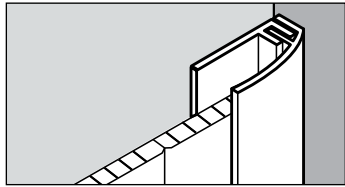
Wide Dumaclip® 250mm



Small Dumaclip® 167mm

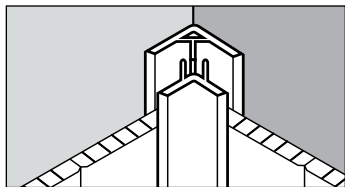


TRIMS



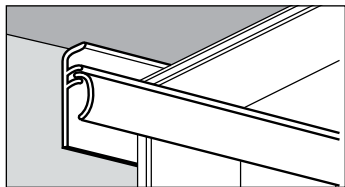
Start Trim

An end rail makes it possible to fit the panelling flush with the wall or ceiling. The first panel is best fitted into the end rail with a trimmed tongue side.



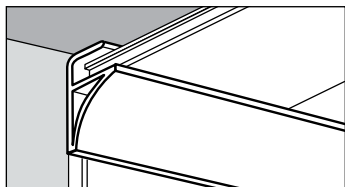
Universal Corner

Inside and outside corners can easily be finished with a universal corner rail, which is fitted before the panelling is applied.



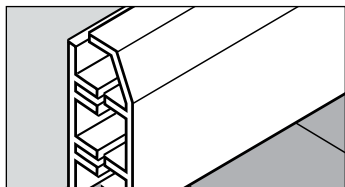
Multifunctional Trim

A perfect finishing against a wall or ceiling can be obtained with this trim for horizontal and vertical cornering. Can also be used as a start trim.



Decorative Crown Moulding

These special ceiling rails are used for finishing the ceilings after the panelling has been fitted and before the ceiling covering is applied.



Skirting

Practical and attractive skirting boards conceal wiring and guarantee a perfect finish with the floor or wainscots.



The handy **Dumaclip®** box provides extra protection and is very easy to transport. The box is only 1.20m long and easily fits into every car.

1016764A6
PATENT
(2005/0439)

Your Dumaplast dealer:



The only pvc panel
with tongue and groove on four sides

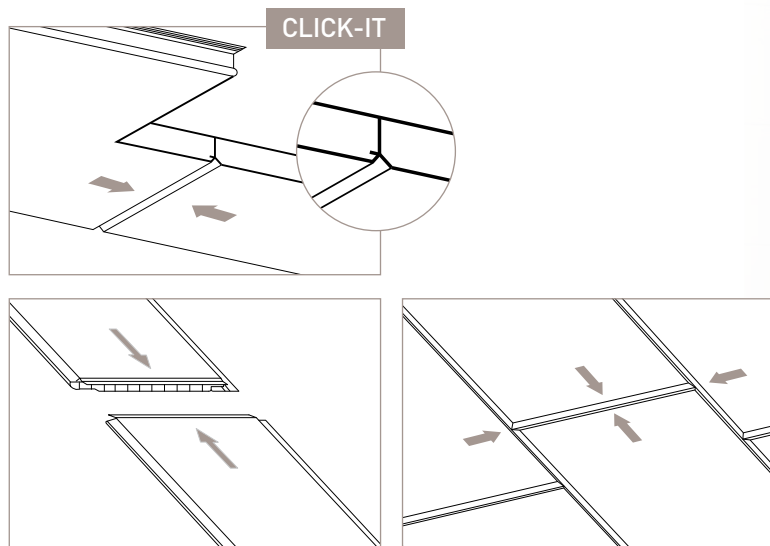


WALL AND CEILING PANELLING WITH AN EXTRA TOUCH...

Do you want to change the way your interior looks? In the blink of an eye and without fraying those nerves to breaking point? Then **Duma-Clip®**, the latest wall and ceiling system from Dumaplast, is the answer. And you don't need to be a handyman, either!

Thanks to the unique **Dumaclip®** joining system, you can connect the panels to each other smoothly and without difficulty. The end result looks bright and attractive. **Dumaclip®** is colour-fast, waterproof, budget-friendly and only requires a minimum of maintenance. Choose from an extensive range of colours to give any room a whole fresh new look.





UNIQUE REVOLUTIONARY JOINING SYSTEM

With the patented **Dumaclip®** joining system, a fastening is also provided at the top side of the panels. In this way, it is possible to bridge any length of ceiling or wall. The panels can be inserted on all sides so that you can effortlessly panel the largest of surfaces.



MANY ADVANTAGES

No extra connection trims

With the unique **Dumaclip®** joining system, you connect the panels at the top side without having to use expensive connection trims. These trims are often hard to install and require a whole lot of extra work and skill. The end effect of **Dumaclip®** also looks a lot more attractive as the joints on all sides are finished in the same way.

CLICK-IT

No extra connection trims



Easy to transport

Pvc wall and ceiling panels are usually only available in long lengths and are therefore hard to transport, with a risk of transport damage. With **Dumaclip®** these problems can be overcome thanks to the handy **Dumaclip®** box. You can easily transport it in the car and in addition the cardboard of the box serves as ideal extra protection during transport.

EASY SIZE

Easy to transport



Installing in no time

The user-friendly **Dumaclip®** panels are only 1.20m long and extremely light. Installation takes place very simply and quickly. Thanks to the practical short lengths, you can also install **Dumaclip®** completely on your own. In this way, you save time and money and you will be able to enjoy your new wall or ceiling a lot more quickly.

EASY FIX

Easy to install



Minimum waste

When during installation you come to the end of an assembled row of panels, you simply saw the last panel to length as required. With this sawn-off piece, you can simply begin the new row, and in this way build on and complete the wall or ceiling. Cutting waste is reduced to a minimum and in addition you also save a pretty penny.

NO WASTE

Eco and budget friendly



Waterproof, washable and low maintenance

Dumaclip® panels are made out of PVC, a plastic that is fully waterproof and fully washable. Maintenance is therefore very simple. All you need to do is clean with a damp cloth and your wall or panel is as good as new. Naturally **Dumaclip®** keeps its original colours, even with intensive maintenance.

RESISTANT

Waterproof and colourfast

